

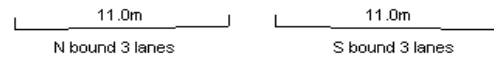
YEAR 2016

CORE STATION 5029

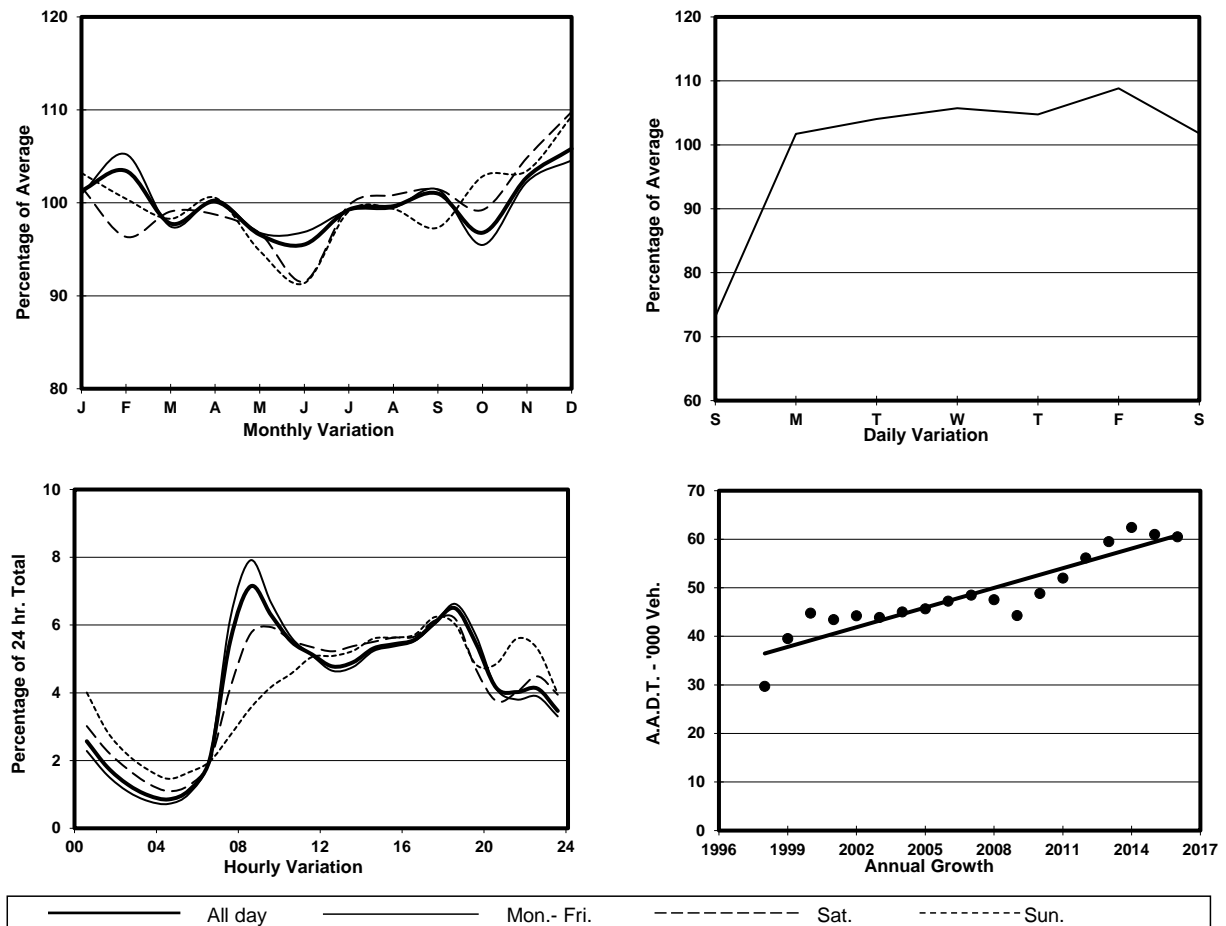
ROAD NETWORK MAJOR

ROAD TYPE EXPRESSWAY

LINK TSING LONG HIGHWAY - TAI LAM TUNNEL (from AU TAU INT to TUEN MUN RD)



## 1. TRAFFIC FLOW VARIATION AND GROWTH



## 2. TRAFFIC CHARACTERISTICS (BY DIRECTION)

Parameter	All - Day	Mon. - Fri.	Sat.	Sun.
<b>SOUTH BOUND</b>				
A.A.D.T.	31100	33310	31760	22570
R 12 / 24 - %	74.3	76	71.5	64.9
R 16 / 24 - %	87.4	88.4	85.5	82.6
AM Peak Hour	0800-0900	0800-0900	0800-0900	0900-1000
One-way flow at AM peak hour	3140	3760	2500	1130
T - % (AM)	-	24.9	-	-
PM Peak Hour	1700-1800	1700-1800	1700-1800	1700-1800
One-way flow at PM peak hour	1700	1760	1800	1460
T - % (PM)	-	28.4	-	-
Prop.of commercial vehicles - 16 hr.	-	28.3	-	-
<b>NORTH BOUND</b>				
A.A.D.T.	29380	31100	30840	22310
R 12 / 24 - %	61.7	62.8	61.1	54.3
R 16 / 24 - %	84.3	85.9	81.2	77.7
AM Peak Hour	0900-1000	0900-1000	0900-1000	0900-1000
One-way flow at AM peak hour	1390	1540	1390	740
T - % (AM)	-	36	-	-
PM Peak Hour	1800-1900	1800-1900	1800-1900	1800-1900
One-way flow at PM peak hour	2280	2550	2110	1360
T - % (PM)	-	20.8	-	-
Prop.of commercial vehicles - 16 hr.	-	28.9	-	-

## 3. OTHER INFORMATION AND COMMENT

**4. Vehicle classification and occupancy - Monday to Friday**

Time		Class of vehicle									
		Motor	Private	Taxi	Private	PLB	Goods veh.		Non	Fr. Bus	
		Cycle	Car		LB		Light	M & H	Fr. Bus	SD	DD
0700-0800	Pro	1.4	43.1	6.7	0.6	0.0	18.5	19.6	2.4	0.0	7.7
	Ocp	1.0	1.4	1.9	7.0	0.0	1.6	1.2	37.3	0.0	69.4
0800-0900	Pro	1.7	48.5	5.7	0.0	0.0	17.2	18.2	3.0	0.0	5.9
	Ocp	1.0	1.4	1.9	0.0	0.0	1.6	1.3	34.6	0.0	69.4
0900-1000	Pro	0.6	45.2	5.8	0.3	0.0	20.4	20.6	1.3	0.0	5.9
	Ocp	1.0	1.5	2.2	5.3	0.0	1.7	1.3	22.5	0.0	43.7
1000-1100	Pro	0.5	38.9	7.9	0.2	0.0	18.9	25.7	2.4	0.0	5.6
	Ocp	1.3	1.6	1.9	2.5	0.0	1.5	1.3	22.3	0.0	40.9
1100-1200	Pro	1.1	45.3	6.3	0.1	0.0	18.7	21.9	1.1	0.0	5.3
	Ocp	1.0	1.5	2.4	3.0	0.0	1.6	1.2	24.3	0.0	41.0
1200-1300	Pro	0.8	41.8	6.9	0.4	0.0	15.8	26.8	1.7	0.0	5.8
	Ocp	1.2	1.6	2.3	4.0	0.0	1.6	1.3	19.4	0.0	40.2
1300-1400	Pro	0.4	38.1	8.6	0.0	0.0	15.8	29.4	1.6	0.0	6.0
	Ocp	1.0	1.4	2.5	0.0	0.0	1.5	1.2	29.2	0.0	45.0
1400-1500	Pro	0.4	41.8	6.2	0.1	0.0	19.6	25.4	1.4	0.0	5.3
	Ocp	1.0	1.6	2.2	3.0	0.0	1.5	1.2	23.1	0.0	38.8
1500-1600	Pro	0.8	40.6	5.7	0.3	0.0	17.6	27.5	2.0	0.0	5.5
	Ocp	1.0	1.5	2.0	1.5	0.0	1.6	1.2	16.9	0.0	40.9
1600-1700	Pro	1.1	44.3	10.1	0.1	0.0	15.8	21.4	1.6	0.0	5.6
	Ocp	1.3	1.7	1.8	1.0	0.0	1.6	1.2	27.5	0.0	48.1
1700-1800	Pro	1.4	48.1	6.9	0.0	0.0	13.8	21.1	1.7	0.0	7.1
	Ocp	1.3	1.4	2.0	0.0	0.0	1.6	1.1	25.7	0.0	57.7
1800-1900	Pro	1.1	58.8	8.5	0.0	0.0	9.2	14.7	1.7	0.0	6.1
	Ocp	1.1	1.6	2.3	0.0	0.0	1.5	1.1	37.1	0.0	77.5
1900-2000	Pro	1.1	65.0	7.7	0.1	0.0	6.3	10.7	2.5	0.0	6.7
	Ocp	1.2	1.5	2.2	1.0	0.0	1.3	1.1	48.6	0.0	66.1
2000-2100	Pro	1.1	60.2	7.7	0.0	0.0	6.7	14.4	1.5	0.0	8.5
	Ocp	1.1	1.3	2.1	0.0	0.0	1.4	1.1	23.3	0.0	46.9
2100-2200	Pro	0.6	52.4	15.9	0.0	0.0	5.2	15.1	2.6	0.0	8.4
	Ocp	1.3	1.3	2.1	0.0	0.0	1.1	1.1	26.3	0.0	47.6
2200-2300	Pro	0.7	52.4	19.5	0.0	0.0	5.2	11.8	2.5	0.0	7.9
	Ocp	1.0	1.4	2.0	0.0	0.0	1.6	1.0	19.7	0.0	48.0
16 hours	Pro	1.0	47.8	8.0	0.1	0.0	14.6	20.3	2.0	0.0	6.3
	Ocp	1.1	1.5	2.1	4.2	0.0	1.6	1.2	29.2	0.0	53.3

**Legend**

**Pro.** Proportion of vehicles in % (Sum may not add up to 100% due to figure rounding)\*

**Ocp.** Average occupancy of vehicles including both driver and passengers\*

**M&H** Medium and Heavy

\* All traffic data are collected from combined bounds except for one way traffic